

# Molding Capabilities— Flexibility is the Key

## Rapid Mold and Manufacturing

Medical Murray recognizes the needs of both performance and manufacturability. Our core competency in nano-molding components as small as .1 mm<sup>3</sup> and up to 5 cc means we have the expertise and capability to meet your needs, both today and in the future.

Our specialized molding includes:

- Insert molding
- Multi-resin molding
- LSR parts that can be over-molded onto many different substrates
- Projects that other molders cannot or will not do!

## Precision Tooling

Our engineering team can help you obtain first prototypes, fast. We utilize Design for Moldability concepts and will deliver a part in hand quickly and with high quality. Whatever your volume requirements, Medical Murray has the tooling available to meet your needs.

- 3D printed tooling allowing for small volumes, rapidly
- SS molds and stocked inserts for quick builds and future production
- 420 SS molds for long-term high quantity manufacturing

Processes are fully documented each step of the way as we produce your part. At the end of the project, the mold and documented process belongs to you.

## Full Scale Production

For parts that have gone through the development process, the knowledge and procedures will be incorporated into the production tooling and manufacturing process. All production takes place in our ISO 13485 certified class 7 clean rooms offering multiple molding machines and secondary machinery such as pad printing. The production processes are developed and documented to yield a part that consistently meets the part requirements.

## Contact Us For More Information

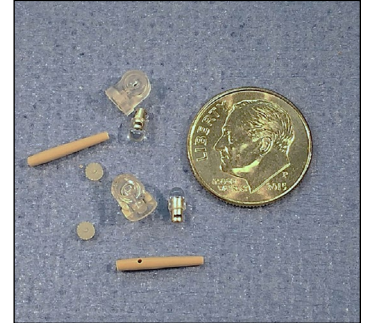
Our team would like to help you create and implement your next medical device project.

Please contact us or visit our website for more information.

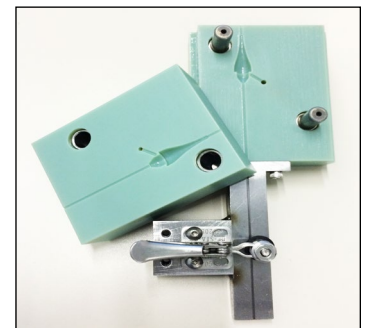
Call us at: **847.620.7990**

Email us at: [info@medicalmurray.com](mailto:info@medicalmurray.com)

Website: [www.medicalmurray.com](http://www.medicalmurray.com)



*Our nano-molding services provide the ability to mold components as small as .1 cubic millimeter.*



*Custom Injection molding with 3D printed tooling.*



*We offer multiple molding technologies in our ISO 13485 class 7 clean rooms.*